



New Vistas on Amygdala Networks in Conditioned Fear

Denis Paré, Gregory J. Quirk and Joseph E. Ledoux

JN 92:1-9, 2004. doi:10.1152/jn.00153.2004

You might find this additional information useful...

This article cites 132 articles, 35 of which you can access free at:

<http://jn.physiology.org/cgi/content/full/92/1/1#BIBL>

This article has been cited by 4 other HighWire hosted articles:

Activity-Dependent Synaptic Plasticity in the Central Nucleus of the Amygdala

R. D. Samson and D. Pare

J. Neurosci., February 16, 2005; 25 (7): 1847-1855.

[\[Abstract\]](#) [\[Full Text\]](#) [\[PDF\]](#)

Building and Burying Fear Memories in the Brain

S. Maren

Neuroscientist, February 1, 2005; 11 (1): 89-99.

[\[Abstract\]](#) [\[PDF\]](#)

Heterosynaptic Long-Term Potentiation of Inhibitory Interneurons in the Lateral Amygdala

E. P. Bauer and J. E. LeDoux

J. Neurosci., October 27, 2004; 24 (43): 9507-9512.

[\[Abstract\]](#) [\[Full Text\]](#) [\[PDF\]](#)

Emotional Perseveration: An Update on Prefrontal-Amygdala Interactions in Fear Extinction

F. Sotres-Bayon, D. E.A. Bush and J. E. LeDoux

Learn. Mem., September 1, 2004; 11 (5): 525-535.

[\[Abstract\]](#) [\[Full Text\]](#) [\[PDF\]](#)

Medline items on this article's topics can be found at <http://highwire.stanford.edu/lists/artbytopic.dtl> on the following topics:

Biochemistry .. Projection Neurons
Neuroscience .. Thalamus
Neuroscience .. Hypothalamus
Neuroscience .. Amygdala
Neuroscience .. Brain Stem
Neuroscience .. Reticular Formation

Updated information and services including high-resolution figures, can be found at:

<http://jn.physiology.org/cgi/content/full/92/1/1>

Additional material and information about *Journal of Neurophysiology* can be found at:

<http://www.the-aps.org/publications/jn>

This information is current as of March 1, 2005 .



New Vistas on Amygdala Networks in Conditioned Fear

Denis Paré,¹ Gregory J. Quirk,² and Joseph E. Ledoux³

¹Center for Molecular and Behavioral Neuroscience, Rutgers State University, Newark, New Jersey 07102; ²Department of Physiology, Ponce School of Medicine, Ponce, Puerto Rico 00732; and ³Center for Neural Science, Meyer Building, New York University, New York, New York 10003

Submitted 17 February 2004; accepted in final form 18 February 2004

Paré, Denis, Gregory J. Quirk, and Joseph E. LeDoux. New vistas on amygdala networks in conditioned fear. *J Neurophysiol* 92: 1–9, 2004; 10.1152/jn.00153.2004. It is currently believed that the acquisition of classically conditioned fear involves potentiation of conditioned thalamic inputs in the lateral amygdala (LA). In turn, LA cells would excite more neurons in the central nucleus (CE) that, via their projections to the brain stem and hypothalamus, evoke fear responses. However, LA neurons do not directly contact brain stem-projecting CE neurons. This is problematic because CE projections to the periaqueductal gray and pontine reticular formation are believed to generate conditioned freezing and fear-potentiated startle, respectively. Moreover, like LA, CE may receive direct thalamic inputs communicating information about the conditioned and unconditioned stimuli. Finally, recent evidence suggests that the CE itself may be a critical site of plasticity. This review attempts to reconcile the current model with these observations. We suggest that potentiated LA outputs disinhibit CE projection neurons via GABAergic intercalated neurons, thereby permitting associative plasticity in CE. Thus plasticity in both LA and CE would be necessary for acquisition of conditioned fear. This revised model also accounts for inhibition of conditioned fear after extinction.

INTRODUCTION

Classical fear conditioning is an experimental model used to study how organisms learn to predict danger from previous experiences. In this model, a neutral sensory stimulus (conditioned stimulus, CS) acquires the ability to elicit fear responses after pairing with a noxious unconditioned stimulus (US). Early on, it was recognized that the amygdala is critical for this form of learning (Blanchard and Blanchard 1972; Kellicut and Schwartzbaum 1963; Spevack et al. 1975). However, identification of pathways that mediate the expression of conditioned responses by way of amygdala outputs (Kapp et al. 1979) and pathways that transmit CS information from sensory systems to the amygdala (LeDoux et al. 1984, 1990b) greatly increased interest in the intra-amygdaloid substrates of Pavlovian fear learning. The number of papers on this issue rose from an average of ~25/y in the 1980s to ~200/y in the last few years.

Several factors account for this surge of interest. First, the simplicity of this experimental paradigm facilitates the study of underlying mechanisms in animal models; the entire neuroscientific armamentarium can be easily applied to the study of fear conditioning. Field potential responses to high-frequency stimulation (Bauer et al. 2002; Tsvetkov et al. 2002), patch-clamp recordings (Mahanty and Sah 1998; Royer et al. 2000a; Weisskopf et al. 1999), single-unit recordings (Collins and

Paré 2000; Maren 2000; Quirk et al. 1995; Repa et al. 2001), pharmacological manipulations (Davis 2000; Schafe et al. 2001; Wilensky et al. 1999), and transgenic approaches (Impey et al. 1998; Shumyatsky et al. 2002) all implicate the amygdala in the acquisition of learned fear. Second, findings from animal studies have been confirmed in humans with functional magnetic resonance imaging (fMRI) techniques (Buchel et al. 1998; LaBar et al. 1998; Whalen et al. 1998), increasing the relevance of the animal model. Third, it is becoming increasingly apparent that the mechanisms underlying Pavlovian fear conditioning have much in common with human anxiety disorders (Bouton et al. 2001; Pitman et al. 1999; Sullivan et al. 2003). Thus understanding the acquisition and extinction of conditioned fear might help us find ways to treat these disorders.

Although controversy persists (Cahill et al. 1999), it is widely believed that the lateral nucleus of the amygdala (LA) is a key site of plastic synaptic events that contributes to fear learning (Blair et al. 2001; LeDoux 2000; Malkani and Rosen 2000; Maren 2001). According to the current model (Fig. 1A), convergence of CS and US inputs increases the efficacy of synapses conveying information about the CS to the LA (LeDoux 2000; Walker and Davis 2000). As a result, subsequent presentations of the CS alone evoke larger responses in the LA (Collins and Paré 2000; Quirk et al. 1995; Repa et al. 2001). The LA, in turn, evokes conditioned fear responses via its projections to the central amygdaloid nucleus (Fig. 1A; Kapp et al. 1979; Krettek and Price 1978; LeDoux et al. 1988; reviewed in Davis 2000), which is the main source of amygdala outputs to brain stem and hypothalamic sites that produce fear responses (Bellgowan and Helmstetter 1996; Davis 2000; De Oca et al. 1998; LeDoux et al. 1988). Thus, in the current model (Fig. 1A), the LA is seen as the major site of plasticity, whereas the central nucleus (CE) is viewed as a passive relay to downstream structures (LeDoux 2000).

This model has great explanatory powers and has done much to galvanize interest in fear conditioning. However, some new data, as well as older findings that went unnoticed, are difficult to reconcile with the current model. In particular, LA does not project directly to CE output neurons (Fig. 1B), and the CE may receive direct inputs from sensory-processing areas (Fig. 1B). Further, new evidence suggests that the CE might itself be a critical site of plasticity independent of LA. Thus we will attempt to reconcile the current model with these discrepant findings. We will also consider the ability of a revised model to account for how conditioned fear is extinguished. In advance,

Address for reprint requests and other correspondence: D. Paré, CMBN, Rutgers State University, 197 University Ave., Newark, NJ 07102 (E-mail: pare@axon.rutgers.edu).

The costs of publication of this article were defrayed in part by the payment of page charges. The article must therefore be hereby marked "advertisement" in accordance with 18 U.S.C. Section 1734 solely to indicate this fact.

we wish to apologize for omissions in our coverage of the existing literature (~2,000 papers).

Evidence supporting the current model

The evidence supporting the critical role of the LA in the formation of tone-shock associations rests principally on four

sets of observations (Blair et al. 2001; Davis 2000; Fanselow and LeDoux 1999; Maren 2001).

First, the LA receives auditory input from the medial section of the medial geniculate nucleus (MGm) and the posterior intralaminar nucleus (PIN) that are the target of inferior colliculus projections (LeDoux et al. 1990b; Turner and Herkenham 1991). Parallel inputs from the auditory cortex also reach the LA (Romanski and LeDoux 1993). Auditory inputs to the LA converge with somatosensory inputs from the same posterior thalamic regions (LeDoux et al. 1990b), which in turn receive input from the spinothalamic tract (LeDoux et al. 1987).

Second, lesions or temporary inactivation of LA during conditioning interferes with the acquisition of conditioned fear responses (Amorapanth et al. 2000; LeDoux et al. 1990a; Maren et al. 2001; Muller et al. 1997; Sacchetti et al. 1999; Wilensky et al. 1999).

Third, LA neurons show associative plasticity during fear conditioning at latencies consistent with potentiation of thalamic inputs (Collins and Paré 2000; Maren 2000; Ono et al. 1995; Quirk et al. 1995; Repa et al. 2001; Rogan et al. 1997).

Fourth, interfering with molecular-signaling mechanisms in LA including *N*-methyl-D-aspartate (NMDA) receptors (Fanselow et al. 1994; Walker and Davis 2002), protein kinases (Schafe et al. 2001), or protein synthesis (Bailey et al. 1999; Lamprecht et al. 2002; Nader 2003; Schafe et al. 1999) prevents long-term memory for fear conditioning.

Thus multiple lines of evidence appear to converge on the LA as a critical site of plasticity in fear conditioning.

Observations that cannot be easily reconciled with the current model

Although the current model correctly ascribes a critical role to LA as a site of plasticity in fear conditioning, some key features of amygdala anatomy are problematic for this view. In addition, some recent studies indicate that the CE might not be a passive relay after all. These points are considered in turn below.

LA IS NOT DIRECTLY LINKED TO BRAIN STEM-PROJECTING CE NEURONS. At the core of the current model are direct projections from LA to CE to brain stem. However, the CE is composed of several subnuclei, only one of which contributes significant projections to the brain stem: the medial sector of CE (CEm)

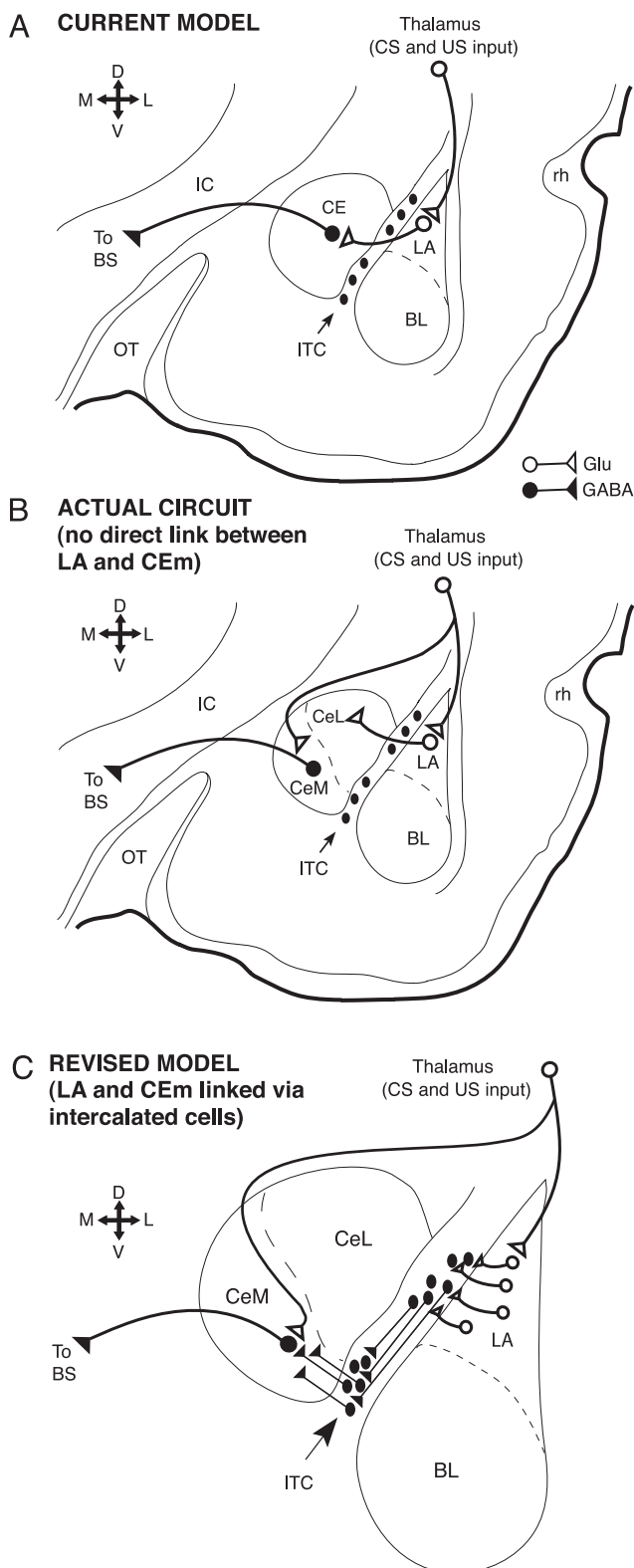


FIG. 1. *A*: scheme of the current classical fear conditioning model. The orientation of the coronal section is indicated by the cross (D, dorsal; V, ventral; L, lateral; M, medial). *B*: actual intra-amygdaloid connectivity, taking into account subdivisions of the central nucleus. Note the apparent disconnect between the lateral amygdala (LA), currently believed to be the only input station of the amygdala for the conditioned stimulus (CS), and the CEM, the only significant source of amygdala projections to brain stem structures mediating fear responses. The scheme also includes posterior thalamic projections to the medial sector of the central nucleus (CEM), which likely transmit multimodal sensory inputs and were not considered previously. *C*: Scheme of the revised model where the LA is linked to CEM via intercalated cells. The revised model also takes into account the possibility that CEM receives information about the CS and unconditioned stimulus (US) from the posterior thalamus. The revised model stipulates that distributed plasticity in the LA and CEM underlies the acquisition of fear conditioned responses. It should be pointed out that this model does not exclude the possibility that there is also plasticity in afferent structures to the amygdala as well as in the targets of the amygdala. BS, brain stem; Glu, glutamate; IC, internal capsule; rh, rhinal sulcus.

(Hopkins and Holstege 1978; Liubashina et al. 2000; Schwaber et al. 1982; Veening et al. 1984). The brain stem projections of the lateral part of CE are limited to the parabrachial nucleus in the pons (Petrovich and Swanson 1997). In contrast, CEM projects massively to various brain stem nuclei including the periaqueductal gray, which mediates freezing (reviewed in Davis 2000), and the pontine reticular formation involved in fear potentiated startle (Rosen et al. 1991) as well as the pedunculopontine, dorsal motor vagal, and solitary tract nuclei. This result was obtained in a number of species including the rat, cat, and rabbit (Hopkins and Holstege 1978; Schwaber et al. 1982; Veening et al. 1984) and was recently replicated in the rat with anterograde tracing methods (Liubashina et al. 2000).

The difficulty comes from the fact that LA has little if any projections to CEM, but rather projects to the lateral or amygdalo-striatal sectors (Fig. 1B). This was first reported in 1978, when Krettek and Price published their seminal study on the internuclear projections of the rat and cat amygdala (Krettek and Price 1978). Since then, this observation was replicated in the rat (Pitkanen et al. 1995), cat (Smith and Paré 1994), and monkey (Pitkanen and Amaral 1998). Thus there is an apparent disconnect in the amygdala between the site of plasticity and site of expression (see Fig. 1B).

Two solutions to this problem are commonly invoked. The first is that the lateral or amygdalo-striatal sector of CE (CEl) projects to the CEM (Jolkkonen and Pitkanen 1998; Petrovich and Swanson 1997). However, this projection, which is relatively minor (Paré and Smith 1993), is GABAergic (McDonald and Augustine 1993; Nitecka and Ben Ari 1987; Paré and Smith 1993). Given that chemical or electrical excitation of CEM elicits the behavioral correlates of fear (reviewed in Davis 2000), GABAergic input from CEI would decrease rather than augment fear expression. Thus CEI is an unlikely candidate for relaying CS inputs from LA to CEM.

A second possible solution to this problem is the existence of indirect projections from LA to CEM via the basal nuclei of the amygdala. There are indeed massive projections from the LA to basal nuclei (Krettek and Price 1978; Pitkanen et al. 1995; Smith and Paré 1994), which in turn project to all sectors of CE (Paré et al. 1995; Petrovich and Swanson 1997; Pitkanen et al. 1995). However, pretraining excitotoxic and electrolytic lesions of the basal nuclei do not interfere with the acquisition of conditioned fear (Amorapanth et al. 2000; Holahan and White 2002; Nader et al. 2001). Therefore this indirect pathway is not essential for fear conditioning, although one study reported that neurotoxic damage to the most anterior basal nuclei impaired fear conditioning (Goosens and Maren 2001). Additional studies, including posttraining lesions, will be needed to fully resolve this question.

Thus it is likely that the current model requires revision. Brain stem-projecting CEM cells do not directly receive information about the CS from LA axons (Fig. 1B), and the indirect pathway through the basal nuclei may not be essential for fear conditioning.

CE MAY RECEIVE DIRECT THALAMIC INPUTS ABOUT THE CS. The current model stipulates that posterior thalamic areas MGm/PIN send information about the tone CS to the LA. This is a well-established and undisputed fact, confirmed in numerous studies (Doron et al. 2002; LeDoux et al. 1985; Linke et al.

2000; Shinonaga et al. 1994; Turner and Herkenham 1991; Woodson et al. 2000). However, the posterior thalamic nucleus (PO), located just medial to the PIN, also projects to the CEM and accessory basal (AB) nuclei (LeDoux et al. 1987; Linke et al. 2000; Turner and Herkenham 1991), raising the possibility that CEM receives auditory input from the thalamus (Fig. 1B). This possibility was initially considered (LeDoux et al. 1987) but later rejected on the basis of tracing data suggesting that the PO does not receive auditory input from the inferior colliculus (IC) (LeDoux et al. 1990b). However, a more recent tracing study indicates that PO receives input from the external and pericentral nuclei of the IC (Linke et al. 2000), areas known to contain auditory responsive neurons (Aitkin et al. 1986). This projection may have been missed in the earlier study (LeDoux et al. 1990b) because the tracer injections into IC largely spared the IC external nucleus. In addition to receiving inputs from IC (Kudo and Niimi 1980), the PO also receives auditory projections from the dorsal nucleus of the lateral lemniscus (Kudo et al. 1983) and the nucleus of the brachium of the IC (Kudo et al. 1984) as well as visual and somatosensory inputs from the superior colliculus and spinal cord (reviewed in Jones 1985). Finally, extracellular recordings in cats showed that neurons in PO respond to auditory, visual, and somatosensory stimuli (Poggio and Mountcastle 1960).

Although these older studies could not distinguish recordings in PO and PIN, the possibility that PO contains auditory neurons that project to CEM cannot be ruled out. This could be tested, as was done in LA (Bordi and LeDoux 1994), by stimulating CEM to antidromically activate PO neurons that project there and then determining whether these PO cells respond to auditory stimuli. Still the existence of an auditory input to CEM, in itself, would not be sufficient to refute the current model. It would, however, raise the possibility that CEM is not a passive relay in fear conditioning. Perhaps the CEM, like the LA, has access to information about both the CS and US and is a site of plasticity. This possibility is considered below.

CE RECEIVES NOCICEPTIVE INPUTS FROM THE BRAIN STEM AND THALAMUS. As previously acknowledged (LeDoux 2000), there is abundant evidence that the CE, including its medial sector, receives subcortical nociceptive (US) inputs. For instance, a number of physiological and anatomical studies have shown that CE receives nociceptive information from the spinal cord and trigeminal nucleus via the parabrachial nuclear complex of the pons (Alden et al. 1994; Bernard et al. 1990, 1992, 1993; reviewed in Bernard and Besson 1990; Bernard et al. 1996; Neugebauer and Li 2003). CE cells respond to both mechanical and thermal noxious stimuli. They generally have large receptive fields and rarely respond to innocuous stimuli. At present, it is unclear whether all nociceptive inputs are relayed to CE by the parabrachial complex. The posterior thalamic complex could also relay nociceptive signals from the spinal cord (Fig. 1B).

CE ITSELF MAY BE A CRITICAL SITE OF PLASTICITY. Deficits caused by CE lesions in aversive conditioning (Amorapanth et al. 2000; Iwata et al. 1986; Kapp et al. 1979; Killcross et al. 1997) are consistent with a critical role of CE in fear expression. More recent studies, however, show that local infusions of drugs that affect CE only during the acquisition phase are sufficient to prevent the formation of long-term fear memory.

For example, infusing the protein synthesis blocker anisomycin into the CE prevents the acquisition of conditioned taste aversion (Bahar et al. 2003). Similarly, infusing the NMDA receptor antagonist APV into the CE prevents long-term memory for classical fear conditioning (Goosens and Maren 2003). Consistent with this, NMDA synaptic currents in CE exhibit a high sensitivity to NR2B-selective antagonists and a slow decay time (Lopez and Sah 2003), which is optimal for associative plasticity. Moreover, thalamic inputs to CEm can undergo NMDA-dependent long-term potentiation (R. Samson and D. Paré, unpublished observations). Finally, preliminary reports indicate that temporary inactivation of CE with muscimol (Wilensky et al. 2000) or inhibition of protein synthesis in CE (Wilensky et al. 2001) prevents the formation of long-term fear memory. Therefore as originally suggested by Kapp and coworkers (Pascoe and Kapp 1985), CE may indeed be a site of plasticity in fear conditioning.

Resolution

If the LA does not project to CEm, how might it facilitate the activity of brain stem projecting CE neurons? We propose that the solution resides in the intercalated (ITC) cell masses. ITC cell masses are dense clusters of GABAergic neurons located between the basolateral amygdaloid complex and the CE (McDonald and Augustine 1993; Nitecka and Ben Ari 1987; Paré and Smith 1993). ITC cells receive glutamatergic inputs from the BLA and generate feed-forward inhibition in the CE (Paré and Smith 1993; Royer et al. 1999). There is a lateromedial correspondence between the position of ITC neurons, where they project in the central nucleus, and where they derive their inputs basolateral (Royer et al. 1999). Critical from the standpoint of the current discussion is the presence of unidirectional connections between ITC cell clusters, directed lateromedially (Fig. 1C) (Royer et al. 2000b). As a result, activation of LA excites ITC cells located at the same lateromedial level, which inhibit more medially located ITC neurons (Fig. 1C), disinhibiting medially located CE neurons (Royer et al. 1999). The end result is a facilitation of CEm output by LA activation (see Fig. 1C).

Thus we submit that the reason why increased CS responsiveness in the LA is critical to the acquisition of conditioned fear responses is that it causes, via ITC neurons, a disinhibition of brain stem projecting CEm cells (Fig. 1C). As discussed below, this disinhibition could allow auditory thalamic inputs to trigger activity-dependent plasticity in CEm (Fig. 1C) when they coincide with US information from the thalamus or parabrachial nucleus. In support of this idea, conditioned increases in tone responses of CE neurons (Pascoe and Kapp 1985; Toyomitsu et al. 2002) occur at approximately the same latency as recently described in LA (30–50 ms) (Repa et al. 2001; Toyomitsu et al. 2002). However, the existence of shorter latency responses in LA (e.g., 10–30 ms) suggests that early initial plasticity in this region plays a key role. Indeed, two sets of plastic cells have been found in LA—one involved in rapidly learning the association in the initial trials and the other acquiring the association more slowly but retaining it longer (Repa et al. 2001). A detailed comparison of the latency and rate of acquisition of conditioned responses in CEm and LA unit will be needed to determine whether thalamic inputs are potentiated in both structures at the same or different times.

Given the foregoing, it is likely that the acquisition of conditioned fear responses depends on *distributed* storage in the amygdala (Fig. 1C) and possibly other regions, such as sensory input regions in the thalamus and cortex (Weinberger 1995), and even in the brain stem (Sanders and Fanselow 2003). Potentiation of CS-responses in the LA would enable plasticity in the CEm. This view does not exclude the possibility that LA inputs to ITC cells can undergo plasticity. In fact, inputs from the basolateral and LA nuclei to ITC cells express NMDA-dependent LTD and LTP (Royer and Paré 2002, 2003).

Relevance of the revised model for extinction of conditioned fear

MEDIAL PREFRONTAL CORTEX AND EXTINCTION MEMORY. Substantial behavioral evidence indicates that extinction inhibits the expression of conditioned fear rather than erase the fear memory (Bouton 1993; Pavlov 1927; Quirk 2002; Rescorla 2001). Because of its divergent projections, inhibition of CEm via ITC cells would be an efficient way of dampening multiple fear responses after extinction. This would require that some set of inputs to ITC cells increase their responsiveness to the CS after extinction.

One candidate mechanism for achieving this could involve the infralimbic region (IL) of medial prefrontal cortex (mPFC), which projects strongly to ITC cells (Freedman et al. 2000; McDonald et al. 1996; Sesack et al. 1989). In support of this, lesions of IL impair extinction (Morgan et al. 1993, 2003; Quirk et al. 2000), and electrical stimulation of IL reduces the expression of conditioned fear (Milad and Quirk 2002). Interestingly, IL stimulation reduces conditioned freezing only if delivered at tone onset (Milad et al. 2004), suggesting gating of the response of downstream structures to tone stimuli. IL neurons do not respond to tones during the first extinction session but respond robustly 24 h later, when rats are recalling extinction (Milad and Quirk 2002) (see Fig. 2). Furthermore, the degree of mPFC potentiation was correlated with recall of extinction, suggesting a causal relationship between prefrontal activity and extinction memory (Herry and Garcia 2002, 2003; Milad and Quirk 2002). Together, these findings implicate the mPFC, not in the initial learning of extinction (within-session), but in the consolidation and subsequent recall of extinction memory.

Although mPFC may inhibit CEm via a projection to ITC cells, other routes are also possible. For example, the mPFC projects to CE's targets in the hypothalamus and brain stem (Fisk and Wyss 2000; Floyd et al. 2000) and could act independently of the amygdala. In support of an amygdala route of activation, however, we recently observed that mPFC stimulation reduced the excitability of brain stem-projecting CEm neurons (Quirk et al. 2003). Basolateral activation of CEm neurons could be prevented by mPFC prestimulation, suggesting feed-forward inhibition of CE by ITC cells (see Fig. 3). There is also evidence that mPFC inhibits CS processing within the basolateral nucleus itself (Rosenkranz and Grace 2002; Rosenkranz et al. 2003).

INPUTS TO INTERCALATED CELLS ARE MODIFIABLE. It was recently reported that basolateral inputs to ITC cells exhibit NMDA-dependent LTP and LTD (Royer and Paré 2002). This

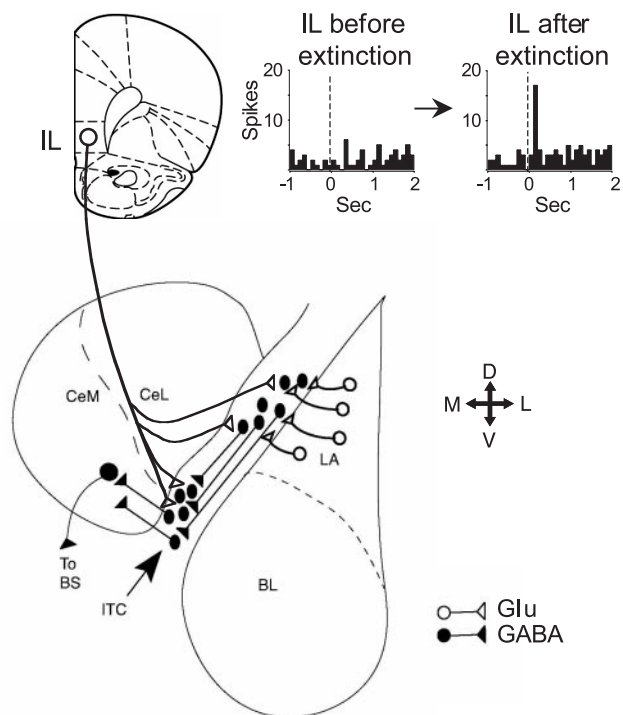


FIG. 2. Extinction-induced increases in infralimbic (IL) activity could inhibit fear expression via intercalated (ITC) cells. *Top left*: scheme of a coronal section of the rat brain showing IL projection to ITC cells (dark ovals in lower scheme). The orientation of the coronal sections is indicated by the cross. Excitation of ITC cells by IL axons produces a feed-forward inhibition of CEM neurons projecting to the brain stem. *Top right*: histogram of tone-evoked activity before (*left*) and 24 h after (*right*) extinction. Dashed lines indicate tone onset. Bin width, 50 ms. Modified after Milad and Quirk (2002).

result suggests that, in addition to inhibiting the expression of conditioned fear, ITC cells may participate in storage of extinction memory. It is now well established that NMDA antagonists given systemically (Baker and Azorlosa 1996; Santini et al. 2001) or directly into the amygdala (Falls et al. 1992; Lin et al. 2003) prevent long-term memory for extinction. Therefore extinction memory might be stored in both ITC cells and mPFC. While it is not known if mPFC inputs to ITC cells are also modifiable, mPFC stimulation paired with extinction tones strengthened extinction memory at a 24-h test (Milad and Quirk 2002). The mechanism of this potentiation could involve plasticity in mPFC inputs (or BL inputs) to ITC cells. Thus the robust tone responses observed in IL during recall of extinction may serve to strengthen extinction memory as it is recalled.

IMPLICATIONS FOR ANXIETY DISORDERS. As originally suggested (LeDoux 1996; Morgan et al. 1993), insufficient inhibition of the amygdala by mPFC could predispose an individual to develop anxiety disorders. In fact, recent neuroimaging studies of patients with posttraumatic stress disorder (PTSD) show decreased activity in medial prefrontal/anterior cingulate areas, correlated with increased activity in the amygdala (Bremner et al. 1999; Shin et al. 2001, 2004). Given that extinction is the basis of exposure therapy for PTSD (Bouton 1988), an obvious therapeutic strategy would be to strengthen extinction consolidation. Recent experiments in rats suggest that extinction can be facilitated with intra-amygdala infusion of D-cycloserine, a glycine site agonist of NMDA receptors (Ledgerwood et al. 2003; Walker et al. 2002). ITC cells in the amygdala are a likely site of action of D-cycloserine, which may facilitate potentiation of prefrontal or basolateral inputs. In addition to NMDA receptors, ITC cells express dopamine type 1 receptors whereas IL axon terminals onto ITC cells express type 2 receptors (Fuxe et al. 2003; Maltais et al. 2000;

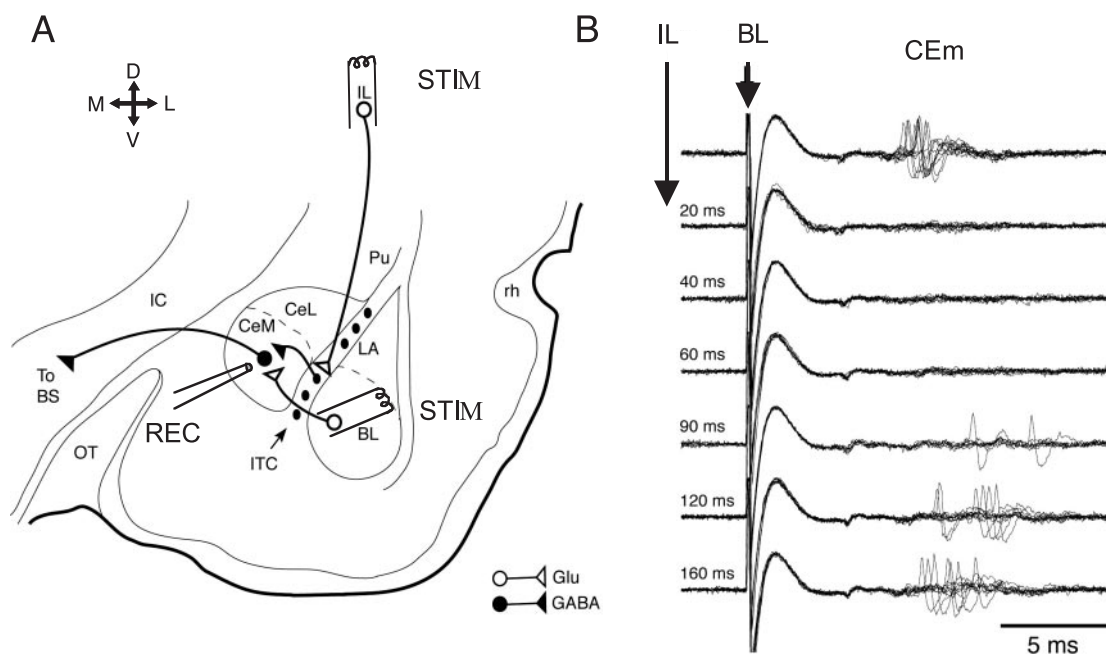


FIG. 3. IL stimulation produces feed-forward inhibition of CEM neurons via the ITC cell masses. The orientation of the coronal section is indicated by the cross. *A*: experimental set-up. Neurons were recorded extracellularly in CEM (REC). Stimulating electrodes were positioned in the BLA and IL. IL prestimulation blocked the BLA-evoked orthodromic activation of CEM cells. Modified after Quirk et al. (2003).

Pinto and Sesack 2003). Importantly, the dopaminergic input to ITC cell masses is much stronger than to LA (Fallon and Ciofi 1992; Fuxe et al. 2003). Thus modulation of ITC cells via these mechanisms may offer additional ways to augment inhibition in the amygdala for potential clinical benefit.

Predictions of the revised model

A number of testable predictions arise from our revised model. Many of these follow the strategy used to implicate the LA in acquisition of conditioned fear. For example, reversible inactivation of CEm during conditioning should prevent the acquisition of conditioned fear responses. Thalamic inputs to CEm neurons should display activity-dependent LTP, which would be sensitive to NMDA antagonists. Furthermore, if LA inputs have the disinhibiting effect proposed here, LA lesions or inactivation should reduce but not abolish LTP of thalamic inputs to the CEm.

Several predictions concern ITC cells. For example, ITC cells located at different lateromedial levels should exhibit contrasting responses to the CS: laterally versus medially located ITC cells should, respectively, exhibit increased or decreased CS responsiveness after conditioning. IL projections to ITC cells are equally robust at all lateromedial levels of the amygdala (A. O. Pinto and D. Paré, unpublished observations). Thus IL stimuli should excite ITC cells globally, in contrast to LA outputs, which affect a restricted portion of lateral ITC cells. If IL inhibits fear via ITC cells, then pairing stimulation of IL with CS onset should reduce the acquisition of conditioned fear responses. In fact, long-term potentiation of IL inputs prior to conditioning might even prevent animals from conditioning.

Conclusion

We have proposed a revision to the current model of fear conditioning in which LA disinhibits CEm output neurons, thereby enabling synaptic plasticity in CEm. We suggest that distributed plasticity in multiple amygdala targets of the thalamus (LA and CE) is required for normal fear learning. Given the pharmacological and molecular differences between LA and CE, this suggests additional mechanisms for modulation of fear learning and fear expression after extinction. We hope that this revised model might stimulate further investigation of the mechanisms underlying the acquisition and extinction of conditioned fear.

GRANTS

This work was supported by National Institutes of Health Grant R01-MH-066856-01 and a National Science Foundation grant to D. Paré, National Institutes of Health Grants R01-MH-58883, P20-RR-015565 and S06-GM-08236 to G. J. Quirk, and National Institutes of Health Grants R37-MH-38774, R01-MH-46516, P50-MH-58911, and K05-MH-067048 to J. E. LeDoux.

REFERENCES

Aitkin LM, Irvine DR, Nelson JE, Merzenich MM, and Clarey JC. Frequency representation in the auditory midbrain and forebrain of a marsupial, the northern native cat (*Dasyurus hallucatus*). *Brain Behav Evol* 29: 17–28, 1986.

Alden M, Besson JM, and Bernard JF. Organization of the efferent projections from the pontine parabrachial area to the bed nucleus of the stria terminalis and neighboring regions: a PHA-L study in the rat. *J Comp Neurol* 341: 289–314, 1994.

Amorapanth P, LeDoux JE, and Nader K. Different lateral amygdala outputs mediate reactions and actions elicited by a fear-arousing stimulus. *Nat Neurosci* 3: 74–79, 2000.

Bahar A, Samuel A, Hazvi S, and Dudai Y. The amygdalar circuit that acquires taste aversion memory differs from the circuit that extinguishes it. *Eur J Neurosci* 17: 1527–1530, 2003.

Bailey DJ, Kim JJ, Sun W, Thompson RF, and Helmstetter FJ. Acquisition of fear conditioning in rats requires the synthesis of mRNA in the amygdala. *Behav Neurosci* 113: 276–282, 1999.

Baker JD and Azorlosa JL. The NMDA antagonist MK-801 blocks the extinction of Pavlovian fear conditioning. *Behav Neurosci* 110: 618–620, 1996.

Bauer EP, Schafe GE, and LeDoux JE. NMDA receptors and L-type voltage-gated calcium channels contribute to long-term potentiation and different components of fear memory formation in the lateral amygdala. *J Neurosci* 22: 5239–5249, 2002.

Bellgowan PS and Helmstetter FJ. Neural systems for the expression of hypoalgesia during nonassociative fear. *Behav Neurosci* 110: 727–736, 1996.

Bernard JF, Alden M, and Besson JM. The organization of the efferent projections from the pontine parabrachial area to the amygdaloid complex: a Phaseolus vulgaris leucoagglutinin (PHA-L) study in the rat. *J Comp Neurol* 329: 201–229, 1993.

Bernard JF and Besson JM. The spino(trigemino)pontoamygdaloid pathway: electrophysiological evidence for an involvement in pain processes. *J Neurophysiol* 63: 473–490, 1990.

Bernard JF, Bester H, and Besson JM. Involvement of the spino-parabrachio-amygdaloid and -hypothalamic pathways in the autonomic and affective emotional aspects of pain. *Prog Brain Res* 107: 243–255, 1996.

Bernard JF, Huang GF, and Besson JM. Effect of noxious somesthetic stimulation on the activity of neurons of the nucleus centralis of the amygdala. *Brain Res* 523: 347–350, 1990.

Bernard JF, Huang GF, and Besson JM. Nucleus centralis of the amygdala and the globus pallidus ventralis: electrophysiological evidence for an involvement in pain processes. *J Neurophysiol* 68: 551–569, 1992.

Blair HT, Schafe GE, Bauer EP, Rodrigues SM, and LeDoux JE. Synaptic plasticity in the lateral amygdala: a cellular hypothesis of fear conditioning. *Learn Mem* 8: 229–242, 2001.

Blanchard DC and Blanchard RJ. Innate and conditioned reactions to threat in rats with amygdaloid lesions. *J Comp Physiol Psychol* 81: 281–290, 1972.

Bordi F and LeDoux JE. Response properties of single units in areas of rat auditory thalamus that project to the amygdala. II. Cells receiving convergent auditory and somatosensory inputs and cells antidromically activated by amygdala stimulation. *Exp Brain Res* 98: 275–286, 1994.

Bouton ME. Context and ambiguity in the extinction of emotional learning: implications for exposure therapy. *Behav Res Ther* 26: 137–149, 1988.

Bouton ME. Context, time, and memory retrieval in the interference paradigms of Pavlovian learning. *Psychol Bull* 114: 80–99, 1993.

Bouton ME, Mineka S, and Barlow DH. A modern learning theory perspective on the etiology of panic disorder. *Psychol Rev* 108: 4–32, 2001.

Bremner JD, Staib LH, Kaloupek D, Southwick SM, Soufer R, and Charney DS. Neural correlates of exposure to traumatic pictures and sound in Vietnam combat veterans with and without posttraumatic stress disorder: a positron emission tomography study. *Biol Psychiatry* 45: 806–816, 1999.

Buchel C, Morris J, Dolan RJ, and Friston KJ. Brain systems mediating aversive conditioning: an event-related fMRI study. *Neuron* 20: 947–957, 1998.

Cahill L, Weinberger NM, Roozendaal B, and McGaugh JL. Is the amygdala a locus of “conditioned fear”? Some questions and caveats. *Neuron* 23: 227–228, 1999.

Collins DR and Paré D. Differential fear conditioning induces reciprocal changes in the sensory responses of lateral amygdala neurons to the CS(+) and CS(–). *Learn Mem* 7: 97–103, 2000.

Davis M. The role of the amygdala in conditioned and unconditioned fear and anxiety. In: *The Amygdala*, edited by Aggleton JP. Oxford, UK: Oxford Univ. Press, 2000, p. 213–288.

De Oca BM, DeCola JP, Maren S, and Fanselow MS. Distinct regions of the periaqueductal gray are involved in the acquisition and expression of defensive responses. *J Neurosci* 18: 3426–3432, 1998.

Doron NN, LeDoux JE, and Semple MN. Redefining the tonotopic core of rat auditory cortex: physiological evidence for a posterior field. *J Comp Neurol* 453: 345–360, 2002.

- Fallon JH and Ciofi P.** Distribution of monoamines within the amygdala. In: *The Amygdala*, edited by Aggleton JP. New York: Wiley-Liss, 1992, p. 67–96.
- Falls WA, Miserendino MJ, and Davis M.** Extinction of fear-potentiated startle: blockade by infusion of an NMDA antagonist into the amygdala. *J Neurosci* 12: 854–863, 1992.
- Fanselow MS, Kim JJ, Yipp J, and De Oca B.** Differential effects of the N-methyl-D-aspartate antagonist DL-2-amino-5-phosphonovalerate on acquisition of fear of auditory and contextual cues. *Behav Neurosci* 108: 235–240, 1994.
- Fanselow MS and LeDoux JE.** Why we think plasticity underlying Pavlovian fear conditioning occurs in the basolateral amygdala. *Neuron* 23: 229–232, 1999.
- Fisk GD and Wyss JM.** Descending projections of infralimbic cortex that mediate stimulation-evoked changes in arterial pressure. *Brain Res* 859: 83–95, 2000.
- Floyd NS, Price JL, Ferry AT, Keay KA, and Bandler R.** Orbitomedial prefrontal cortical projections to distinct longitudinal columns of the periaqueductal gray in the rat. *J Comp Neurol* 422: 556–578, 2000.
- Freedman LJ, Insel TR, and Smith Y.** Subcortical projections of area 25 (subgenual cortex) of the macaque monkey. *J Comp Neurol* 421: 172–188, 2000.
- Fuxe K, Jacobsen KX, Hoistad M, Tinner B, Jansson A, Staines WA, and Agnati LF.** The dopamine D1 receptor-rich main and paracapsular intercalated nerve cell groups of the rat amygdala: relationship to the dopamine innervation. *Neuroscience* 119: 733–746, 2003.
- Goossens KA and Maren S.** Contextual and auditory fear conditioning are mediated by the lateral, basal, and central amygdaloid nuclei in rats. *Learn Mem* 8: 148–155, 2001.
- Goossens KA and Maren S.** Pretraining NMDA receptor blockade in the basolateral complex, but not the central nucleus, of the amygdala prevents savings of conditional fear. *Behav Neurosci* 117: 738–750, 2003.
- Herry C and Garcia R.** Prefrontal cortex long-term potentiation, but not long-term depression, is associated with the maintenance of extinction of learned fear in mice. *J Neurosci* 22: 577–583, 2002.
- Herry C and Garcia R.** Behavioral and paired-pulse facilitation analyses of long-lasting depression at excitatory synapses in the medial prefrontal cortex in mice. *Behav Brain Res* 146: 89–96, 2003.
- Holahan MR and White NM.** Conditioned memory modulation, freezing, and avoidance as measures of amygdala-mediated conditioned fear. *Neurobiol Learn Mem* 77: 250–275, 2002.
- Hopkins DA and Holstege G.** Amygdaloid projections to the mesencephalon, pons and medulla oblongata in the cat. *Exp Brain Res* 32: 529–547, 1978.
- Impey S, Smith DM, Obrietan K, Donahue R, Wade C, and Storm DR.** Stimulation of cAMP response element (CRE)-mediated transcription during contextual learning. *Nat Neurosci* 1: 595–601, 1998.
- Iwata J, LeDoux JE, Meeley MP, Arneric S, and Reis DJ.** Intrinsic neurons in the amygdaloid field projected to by the medial geniculate body mediate emotional responses conditioned to acoustic stimuli. *Brain Res* 383: 195–214, 1986.
- Jolkkonen E and Pitkanen A.** Intrinsic connections of the rat amygdaloid complex: projections originating in the central nucleus. *J Comp Neurol* 395: 53–72, 1998.
- Jones EG.** *The Thalamus*. New York: Plenum, 1985.
- Kapp BS, Frysinger RC, Gallagher M, and Haselton JR.** Amygdala central nucleus lesions: effect on heart rate conditioning in the rabbit. *Physiol Behav* 23: 1109–1117, 1979.
- Kellicott MH and Schwartzbaum JS.** Formation of a conditioned emotional response (CER) following lesions of the amygdaloid complex in rats. *Psychol Rev* 12: 351–358, 1963.
- Killcross S, Robbins TW, and Everitt BJ.** Different types of fear-conditioned behaviour mediated by separate nuclei within amygdala. *Nature* 388: 377–380, 1997.
- Krettek JE and Price JL.** A description of the amygdaloid complex in the rat and cat with observations on intra-amygdaloid axonal connections. *J Comp Neurol* 178: 255–280, 1978.
- Kudo M, Itoh K, Kawamura S, and Mizuno N.** Direct projections to the pretectum and the midbrain reticular formation from auditory relay nuclei in the lower brainstem of the cat. *Brain Res* 288: 13–19, 1983.
- Kudo M and Niimi K.** Ascending projections of the inferior colliculus in the cat: an autoradiographic study. *J Comp Neurol* 191: 545–556, 1980.
- Kudo M, Tashiro T, Higo S, Matsuyama T, and Kawamura S.** Ascending projections from the nucleus of the brachium of the inferior colliculus in the cat. *Exp Brain Res* 54: 203–211, 1984.
- LaBar KS, Gatenby JC, Gore JC, LeDoux JE, and Phelps EA.** Human amygdala activation during conditioned fear acquisition and extinction: a mixed-trial fMRI study. *Neuron* 20: 937–945, 1998.
- Lamprecht R, Farb CR, and LeDoux JE.** Fear memory formation involves p190 RhoGAP and ROCK proteins through a GRB2-mediated complex. *Neuron* 36: 727–738, 2002.
- Ledgerwood L, Richardson R, and Cranney J.** Effects of D-cycloserine on extinction of conditioned freezing. *Behav Neurosci* 117: 341–349, 2003.
- LeDoux JE.** *The Emotional Brain*. New York: Simon and Schuster, 1996.
- LeDoux JE.** Emotion circuits in the brain. *Annu Rev Neurosci* 23: 155–184, 2000.
- LeDoux JE, Cicchetti P, Xagoraris A, and Romanski LM.** The lateral amygdaloid nucleus: sensory interface of the amygdala in fear conditioning. *J Neurosci* 10: 1062–1069, 1990a.
- LeDoux JE, Farb C, and Ruggiero DA.** Topographic organization of neurons in the acoustic thalamus that project to the amygdala. *J Neurosci* 10: 1043–1054, 1990b.
- LeDoux JE, Iwata J, Cicchetti P, and Reis DJ.** Different projections of the central amygdaloid nucleus mediate autonomic and behavioral correlates of conditioned fear. *J Neurosci* 8: 2517–2529, 1988.
- LeDoux JE, Ruggiero DA, Forest R, Stornetta R, and Reis DJ.** Topographic organization of convergent projections to the thalamus from the inferior colliculus and spinal cord in the rat. *J Comp Neurol* 264: 123–146, 1987.
- LeDoux JE, Ruggiero DA, and Reis DJ.** Projections to the subcortical forebrain from anatomically defined regions of the medial geniculate body in the rat. *J Comp Neurol* 242: 182–213, 1985.
- LeDoux JE, Sakaguchi A, and Reis DJ.** Subcortical efferent projections of the medial geniculate nucleus mediate emotional responses conditioned to acoustic stimuli. *J Neurosci* 4: 683–698, 1984.
- Lin CH, Yeh SH, Lu HY, and Gean PW.** The similarities and diversities of signal pathways leading to consolidation of conditioning and consolidation of extinction of fear memory. *J Neurosci* 23: 8310–8317, 2003.
- Linke R, Braune G, and Schwegler H.** Differential projection of the posterior paralaminar thalamic nuclei to the amygdaloid complex in the rat. *Exp Brain Res* 134: 520–532, 2000.
- Liubashina O, Jolkkonen E, and Pitkanen A.** Projections from the central nucleus of the amygdala to the gastric related area of the dorsal vagal complex: a Phaseolus vulgaris-leucoagglutinin study in rat. *Neurosci Lett* 291: 85–88, 2000.
- Lopez DA and Sah P.** Development and subunit composition of synaptic NMDA receptors in the amygdala: NR2B synapses in the adult central amygdala. *J Neurosci* 23: 6876–6883, 2003.
- Mahanty NK and Sah P.** Calcium-permeable AMPA receptors mediate long-term potentiation in interneurons in the amygdala. *Nature* 394: 683–687, 1998.
- Malkani S and Rosen JB.** Specific induction of early growth response gene 1 in the lateral nucleus of the amygdala following contextual fear conditioning in rats. *Neuroscience* 97: 693–702, 2000.
- Maltais S, Te C, Drolet G, and Falardeau P.** Cellular colocalization of dopamine D1 mRNA and D2 receptor in rat brain using a D2 dopamine receptor specific polyclonal antibody. *Prog Neuropsychopharmacol Biol Psychiatry* 24: 1127–1149, 2000.
- Maren S.** Auditory fear conditioning increases CS-elicited spike firing in lateral amygdala neurons even after extensive overtraining. *Eur J Neurosci* 12: 4047–4054, 2000.
- Maren S.** Neurobiology of Pavlovian fear conditioning. *Annu Rev Neurosci* 24: 897–931, 2001.
- Maren S, Yap SA, and Goossens KA.** The amygdala is essential for the development of neuronal plasticity in the medial geniculate nucleus during auditory fear conditioning in rats. *J Neurosci* 21: RC135, 2001.
- McDonald AJ and Augustine JR.** Localization of GABA-like immunoreactivity in the monkey amygdala. *Neuroscience* 52: 281–294, 1993.
- McDonald AJ, Mascagni F, and Guo L.** Projections of the medial and lateral prefrontal cortices to the amygdala: a Phaseolus vulgaris leucoagglutinin study in the rat. *Neuroscience* 71: 55–75, 1996.
- Milad MR and Quirk GJ.** Neurons in medial prefrontal cortex signal memory for fear extinction. *Nature* 420: 70–74, 2002.
- Milad MR, Vidal-Gonzalez I, and Quirk GJ.** Electrical stimulation of medial prefrontal cortex reduces conditioned fear in a temporally specific manner. *Behav Neurosci* 118: 389–395, 2004.
- Morgan MA, Romanski LM, and LeDoux JE.** Extinction of emotional learning: contribution of medial prefrontal cortex. *Neurosci Lett* 163: 109–113, 1993.

- Morgan MA, Schulkin J, and LeDoux JE.** Ventral medial prefrontal cortex and emotional perseveration: the memory for prior extinction training. *Behav Brain Res* 146: 121–130, 2003.
- Muller J, Corodimas KP, Fridel Z, and LeDoux JE.** Functional inactivation of the lateral and basal nuclei of the amygdala by muscimol infusion prevents fear conditioning to an explicit conditioned stimulus and to contextual stimuli. *Behav Neurosci* 111: 683–691, 1997.
- Nader K.** Memory traces unbound. *Trends Neurosci* 26: 65–72, 2003.
- Nader K, Majidshad P, Amorpant P, and LeDoux JE.** Damage to the lateral and central, but not other, amygdaloid nuclei prevents the acquisition of auditory fear conditioning. *Learn Mem* 8: 156–163, 2001.
- Neugebauer V and Li W.** Differential sensitization of amygdala neurons to afferent inputs in a model of arthritic pain. *J Neurophysiol* 89: 716–727, 2003.
- Nitecka L and Ben Ari Y.** Distribution of GABA-like immunoreactivity in the rat amygdaloid complex. *J Comp Neurol* 266: 45–55, 1987.
- Ono T, Nishijo H, and Uwano T.** Amygdala role in conditioned associative learning. *Prog Neurobiol* 46: 401–422, 1995.
- Paré D and Smith Y.** The intercalated cell masses project to the central and medial nuclei of the amygdala in cats. *Neuroscience* 57: 1077–1090, 1993.
- Paré D, Smith Y, and Paré JF.** Intra-amygdaloid projections of the basolateral and basomedial nuclei in the cat: Phaseolus vulgaris-leucoagglutinin anterograde tracing at the light and electron microscopic level. *Neuroscience* 69: 567–583, 1995.
- Pascoe JP and Kapp BS.** Electrophysiological characteristics of amygdaloid central nucleus neurons during Pavlovian fear conditioning in the rabbit. *Behav Brain Res* 16: 117–133, 1985.
- Pavlov I.** *Conditioned Reflexes*. London: Oxford, 1927.
- Petrovich GD and Swanson LW.** Projections from the lateral part of the central amygdala nucleus to the postulated fear conditioning circuit. *Brain Res* 763: 247–254, 1997.
- Pinto AO and Sesack SR.** Prefrontal cortex projections to the rat amygdala: spatial relationships to dopamine and serotonin afferents. *Ann NY Acad Sci* 985: 542–544, 2003.
- Pitkanen A and Amaral DG.** Organization of the intrinsic connections of the monkey amygdaloid complex: projections originating in the lateral nucleus. *J Comp Neurol* 398: 431–458, 1998.
- Pitkanen A, Stefanacci L, Farb CR, Go GG, LeDoux JE, and Amaral DG.** Intrinsic connections of the rat amygdaloid complex: projections originating in the lateral nucleus. *J Comp Neurol* 356: 288–310, 1995.
- Pitman RK, Orr SP, Shalev AY, Metzger LJ, and Mellman TA.** Psychophysiological alterations in post-traumatic stress disorder. *Semin Clin Neuropsychiatry* 4: 234–241, 1999.
- Poggio GF and Mountcastle VB.** A study in the functional contributions of the lemniscal and spinothalamic systems to somatic sensibility: Central nervous mechanisms in pain. *Bull Johns Hopkins Hosp* 106: 266–316, 1960.
- Quirk GJ.** Memory for extinction of conditioned fear is long-lasting and persists following spontaneous recovery. *Learn Mem* 9: 402–407, 2002.
- Quirk GJ, Likhtik E, Pelletier JG, and Paré D.** Stimulation of medial prefrontal cortex decreases the responsiveness of central amygdala output neurons. *J Neurosci* 23: 8800–8807, 2003.
- Quirk GJ, Reppas CB, and LeDoux JE.** Fear conditioning enhances short-latency auditory responses of lateral amygdala neurons: parallel recordings in the freely behaving rat. *Neuron* 15: 1029–1039, 1995.
- Quirk GJ, Russo GK, Barron JL, and Lebron K.** The role of ventromedial prefrontal cortex in the recovery of extinguished fear. *J Neurosci* 20: 6225–6231, 2000.
- Repa JC, Muller J, Apergis J, Desrochers TM, Zhou Y, and LeDoux JE.** Two different lateral amygdala cell populations contribute to the initiation and storage of memory. *Nat Neurosci* 4: 724–731, 2001.
- Rescorla RA.** Retraining of extinguished Pavlovian stimuli. *J Exp Psychol Anim Behav Process* 27: 115–124, 2001.
- Rogan MT, Staubli UV, and LeDoux JE.** Fear conditioning induces associative long-term potentiation in the amygdala. *Nature* 390: 604–607, 1997.
- Romanski LM and LeDoux JE.** Information cascade from primary auditory cortex to the amygdala: corticocortical and corticoamygdaloid projections of temporal cortex in the rat. *Cereb Cortex* 3: 515–532, 1993.
- Rosen JB, Hitchcock JM, Sananes CB, Miserendino MJ, and Davis M.** A direct projection from the central nucleus of the amygdala to the acoustic startle pathway: anterograde and retrograde tracing studies. *Behav Neurosci* 105: 817–825, 1991.
- Rosenkranz JA and Grace AA.** Cellular mechanisms of infralimbic and prelimbic prefrontal cortical inhibition and dopaminergic modulation of basolateral amygdala neurons in vivo. *J Neurosci* 22: 324–337, 2002.
- Rosenkranz JA, Moore H, and Grace AA.** The prefrontal cortex regulates lateral amygdala neuronal plasticity and responses to previously conditioned stimuli. *J Neurosci* 23: 11054–11064, 2003.
- Royer S, Martina M, and Paré D.** An inhibitory interface gates impulse traffic between the input and output stations of the amygdala. *J Neurosci* 19: 10575–10583, 1999.
- Royer S, Martina M, and Paré D.** Bistable behavior of inhibitory neurons controlling impulse traffic through the amygdala: role of a slowly deactivating K^+ current. *J Neurosci* 20: 9034–9039, 2000a.
- Royer S, Martina M, and Paré D.** Polarized synaptic interactions between intercalated neurons of the amygdala. *J Neurophysiol* 83: 3509–3518, 2000b.
- Royer S and Paré D.** Bidirectional synaptic plasticity in intercalated amygdala neurons and the extinction of conditioned fear responses. *Neuroscience* 115: 455–462, 2002.
- Royer S and Paré D.** Conservation of total synaptic weight through balanced synaptic depression and potentiation. *Nature* 422: 518–522, 2003.
- Sacchetti B, Lorenzini CA, Baldi E, Tassoni G, and Bucherelli C.** Auditory thalamus, dorsal hippocampus, basolateral amygdala, and perirhinal cortex role in the consolidation of conditioned freezing to context and to acoustic conditioned stimulus in the rat. *J Neurosci* 19: 9570–9578, 1999.
- Sanders MJ and Fanselow MS.** Opioid receptor blockade in subregions of the periaqueductal gray produce distinct effects on the acquisition and expression of context fear. *Soc Neurosci Abstr* 624.16: 2003.
- Santini E, Muller RU, and Quirk GJ.** Consolidation of extinction learning involves transfer from NMDA-independent to NMDA-dependent memory. *J Neurosci* 21: 9009–9017, 2001.
- Schafe GE, Nadel NV, Sullivan GM, Harris A, and LeDoux JE.** Memory consolidation for contextual and auditory fear conditioning is dependent on protein synthesis, PKA, and MAP kinase. *Learn Mem* 6: 97–110, 1999.
- Schafe GE, Nader K, Blair HT, and LeDoux JE.** Memory consolidation of Pavlovian fear conditioning: a cellular and molecular perspective. *Trends Neurosci* 24: 540–546, 2001.
- Schwaber JS, Kapp BS, Higgins GA, and Rapp PR.** Amygdaloid and basal forebrain direct connections with the nucleus of the solitary tract and the dorsal motor nucleus. *J Neurosci* 2: 1424–1438, 1982.
- Sesack SR, Deutch AY, Roth RH, and Bunney BS.** Topographical organization of the efferent projections of the medial prefrontal cortex in the rat: an anterograde tract-tracing study with Phaseolus vulgaris leucoagglutinin. *J Comp Neurol* 290: 213–242, 1989.
- Shin LM, Orr SP, Carson MA, Rauch SL, Macklin ML, Lasko NB, Peters PM, Metzger LJ, Dougherty DD, Cannistraro PA, Alpert NM, Fischman AJ, and Pitman RK.** Regional cerebral blood flow in the amygdala and medial prefrontal cortex during traumatic imagery in male and female Vietnam veterans with PTSD. *Arch Gen Psychiatry* 61: 168–176, 2004.
- Shin LM, Whalen PJ, Pitman RK, Bush G, Macklin ML, Lasko NB, Orr SP, McInerney SC, and Rauch SL.** An fMRI study of anterior cingulate function in posttraumatic stress disorder. *Biol Psychiatry* 50: 932–942, 2001.
- Shinonaga Y, Takada M, and Mizuno N.** Direct projections from the non-laminated divisions of the medial geniculate nucleus to the temporal polar cortex and amygdala in the cat. *J Comp Neurol* 340: 405–426, 1994.
- Shumyatsky GP, Tsvetkov E, Malleret G, Vronskaya S, Hatton M, Hampton L, Battey JF, Dulac C, Kandel ER, and Bolshakov VY.** Identification of a signaling network in lateral nucleus of amygdala important for inhibiting memory specifically related to learned fear. *Cell* 111: 905–918, 2002.
- Smith Y and Paré D.** Intra-amygdaloid projections of the lateral nucleus in the cat: PHA-L anterograde labeling combined with postembedding GABA and glutamate immunocytochemistry. *J Comp Neurol* 342: 232–248, 1994.
- Spevack AA, Campbell CT, and Drake L.** Effect of amygdectomy on habituation and CER in rats. *Physiol Behav* 15: 199–207, 1975.
- Sullivan GM, Apergis J, Gorman JM, and LeDoux JE.** Rodent doxapram model of panic: behavioral effects and c-Fos immunoreactivity in the amygdala. *Biol Psychiatry* 53: 863–870, 2003.
- Toyomitsu Y, Nishijo H, Uwano T, Kuratsu J, and Ono T.** Neuronal responses of the rat amygdala during extinction and reassociation learning in elementary and configural associative tasks. *Eur J Neurosci* 15: 753–768, 2002.
- Tsvetkov E, Carlezon WA, Benes FM, Kandel ER, and Bolshakov VY.** Fear conditioning occludes LTP-induced presynaptic enhancement of synaptic transmission in the cortical pathway to the lateral amygdala. *Neuron* 34: 289–300, 2002.



- Turner BH and Herkenham M.** Thalamoamygdaloid projections in the rat: a test of the amygdala's role in sensory processing. *J Comp Neurol* 313: 295–325, 1991.
- Veening JG, Swanson LW, and Sawchenko PE.** The organization of projections from the central nucleus of the amygdala to brainstem sites involved in central autonomic regulation: a combined retrograde transport-immunohistochemical study. *Brain Res* 303: 337–357, 1984.
- Walker DL and Davis M.** Involvement of NMDA receptors within the amygdala in short- versus long-term memory for fear conditioning as assessed with fear-potentiated startle. *Behav Neurosci* 114: 1019–1033, 2000.
- Walker DL and Davis M.** The role of amygdala glutamate receptors in fear learning, fear-potentiated startle, and extinction. *Pharmacol Biochem Behav* 71: 379–392, 2002.
- Walker DL, Ressler KJ, Lu KT, and Davis M.** Facilitation of conditioned fear extinction by systemic administration or intra-amygdala infusions of D-cycloserine as assessed with fear-potentiated startle in rats. *J Neurosci* 22: 2343–2351, 2002.
- Weinberger NM.** Dynamic regulation of receptive fields and maps in the adult sensory cortex. *Annu Rev Neurosci* 18: 129–158, 1995.
- Weisskopf MG, Bauer EP, and LeDoux JE.** L-type voltage-gated calcium channels mediate NMDA-independent associative long-term potentiation at thalamic input synapses to the amygdala. *J Neurosci* 19: 10512–10519, 1999.
- Whalen PJ, Rauch SL, Etcoff NL, McInerney SC, Lee MB, and Jenike MA.** Masked presentations of emotional facial expressions modulate amygdala activity without explicit knowledge. *J Neurosci* 18: 411–418, 1998.
- Wilensky AE, Schafe GE, and LeDoux JE.** Functional inactivation of amygdala nuclei during acquisition of Pavlovian fear conditioning. *Soc Neurosci Abstr* 26: 465, 2000.
- Wilensky AE, Schafe GE, and LeDoux JE.** Does the central nucleus of the amygdala contribute to the consolidation of auditory fear conditioning? *Soc Neurosci Abstr* 27: 187, 2001.
- Wilensky AE, Schafe GE, and LeDoux JE.** Functional inactivation of the amygdala before but not after auditory fear conditioning prevents memory formation. *J Neurosci* 19: RC48, 1999.
- Woodson W, Farb CR, and LeDoux JE.** Afferents from the auditory thalamus synapse on inhibitory interneurons in the lateral nucleus of the amygdala. *Synapse* 38: 124–137, 2000.